

# WINDOWS INTUNE OVERVIEW



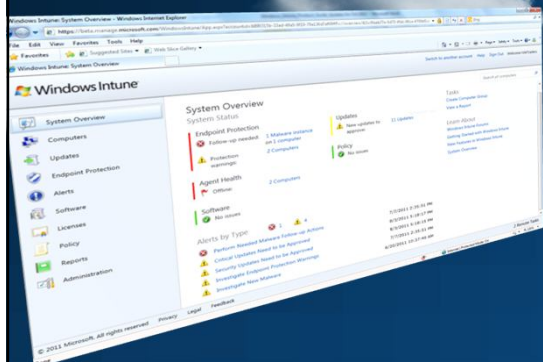
Charlie Russel  
Microsoft MVP

## AGENDA

- Windows Intune Overview
- PC Management with Windows Intune (Oct 2011 release)
- What is new in Spring Pre-Release (If TIME!)
- Q&A

# MANAGE & SECURE PCS AND DEVICES ANYWHERE

Simple Web-based Administration Console and a friendly IW experience



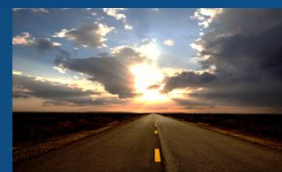
- ✓ Help protect PCs from malware
- ✓ Manage updates
- ✓ Distribute software
- ✓ Proactive monitoring and alerts
- ✓ Provide remote assistance
- ✓ Inventory hardware and software
- ✓ Monitor & track licenses
- ✓ Increase insight with reporting
- ✓ Set security policies

## Enabling Flexible Workstyles

- ✓ Computers can be managed from the office, branch office, or on the road
- ✓ IT and partners can work from virtually anywhere

## VISION

Our **vision** for Windows Intune is to always deliver the **best Windows** experience with **enterprise-class** management and security



### ENABLE FLEXIBLE WORKSTYLES

Empower users to work from anywhere, anytime with the tools they need



### SMART MANAGEMENT

Deliver simplified, enterprise-class management for IT with less costs and higher productivity



### LATEST IN WINDOWS

Give users a modern OS experience for greater productivity, security, and mobility benefits



### RAPID RELEASE CYCLES

Provide customers continuous improvements & new features without costly deployments

## INTUNE IN MOTION

### Complement to SCCM

Extends desktop management to last remaining unmanaged desktops such as remote users, non-domain joined PCs or home computers

### Cloud Service

Quick deployment for satellite offices, new acquisitions, or for organizations with limited server infrastructure and IT resources

### For Windows Enterprise

Subscription model for latest Windows Enterprise edition

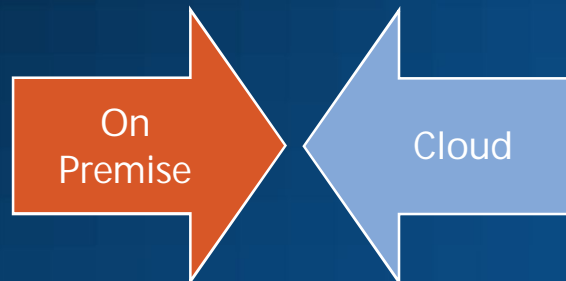


## CHALLENGES IN MANAGING BUSINESS PC'S



- Workers in many locations
- Non-domain joined desktops
- Workers "offline" for extended periods
- Compromised security on remote PCs
- Multiple configurations, versions
- Lack of insight into PCs & inventory
- Infrastructure investments required

# Microsoft® Client Management



## CUSTOMER



WHAT ARE CUSTOMERS  
SAYING?





"Windows Intune is proving itself every day. We see better productivity in the office and in the field."

---Ken Supersano, Sr. Director of Technology, Save The Children

"Our support calls are down by 70 percent, proof that Windows Intune is keeping our sales folks productive. They can rely on their laptops for dependable computing and foolproof SkyWire software demos."

---Thomas Castleberry, COO, SkyWire Media

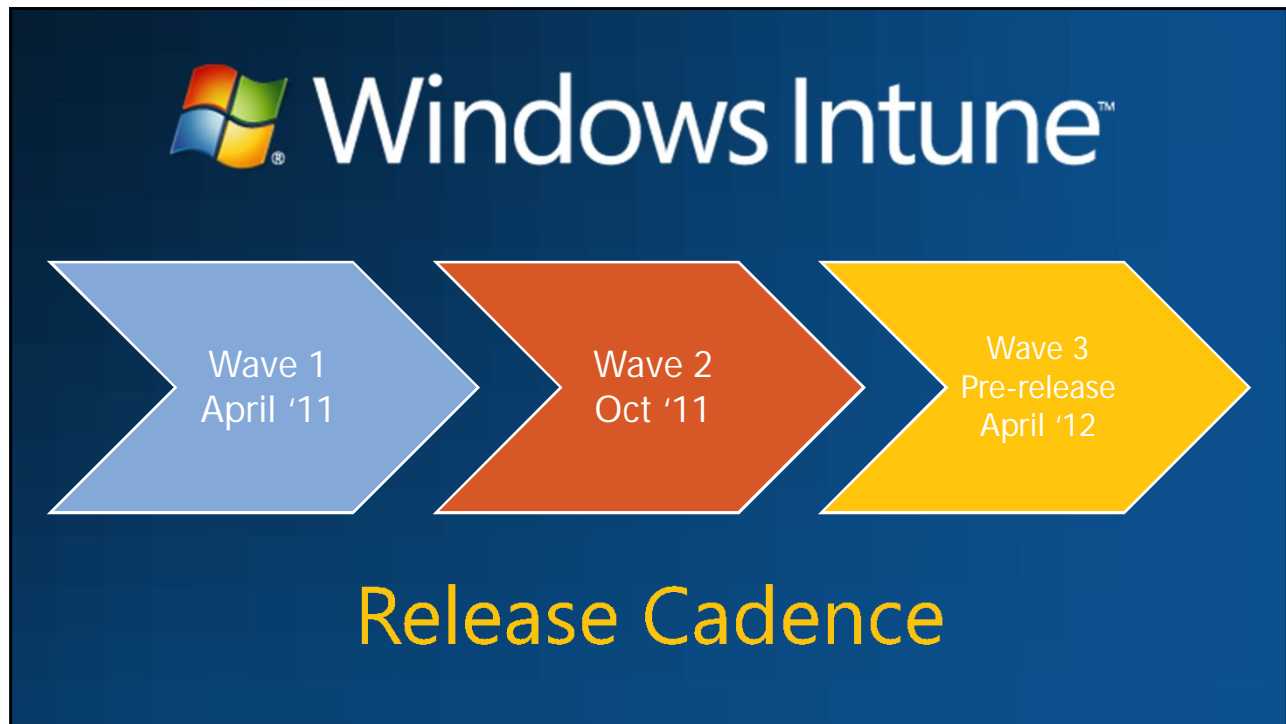
"With Windows Intune, we can help our sales force work more productively by ensuring their PCs are healthy and well-protected. This reduces downtime that impacts their ability to win new Avis customers."

---Artur Brozek, IT Manager, Avis

"We can use Windows Intune to monitor our PC environment, streamline PC management, and provide tighter security—all without increasing hardware or IT management costs."

---Brett Silverthorn, Manager of Technology, Ontario Systems

## PC MANAGEMENT WITH WINDOWS INTUNE



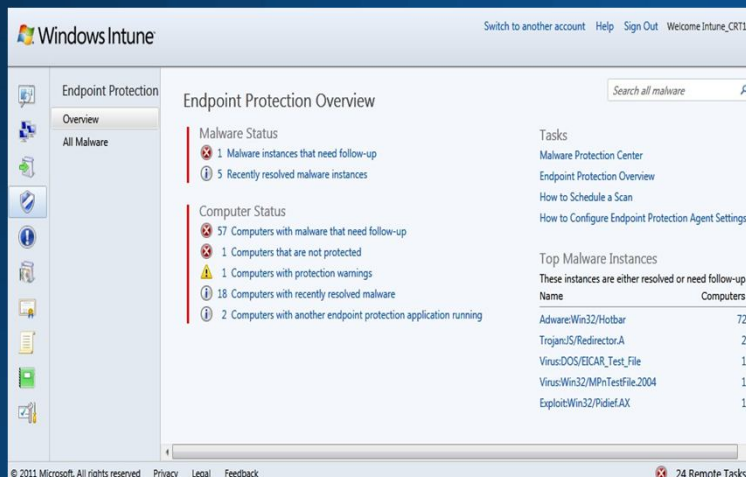


# ENDPOINT PROTECTION

Built on the same protection engine used by FEP 2010

System-wide, per group and per computer status

Follow up actions provided by remote tasks **NEW!**



# SOFTWARE DISTRIBUTION

**Publish and deploy from anywhere to PCs anywhere**

All you need is an access to browser & application installer binary

**Highly reliable, available, secure hosting & distribution of application**

Customer content is opaque to everyone but the customer

Multi-tenant, persistent, fault-tolerant & geo distributed store

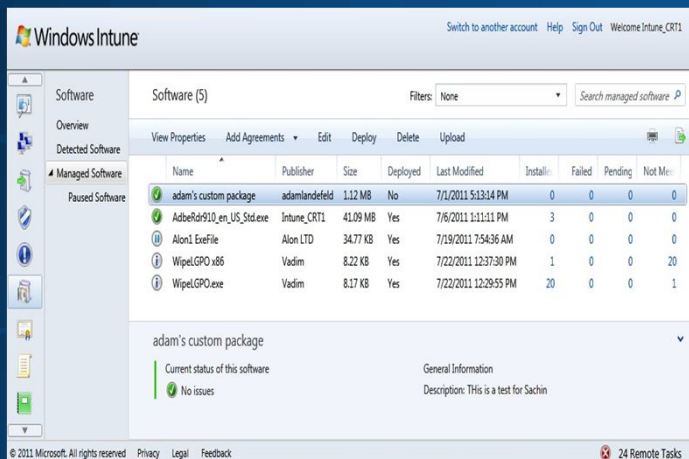
**Easy deployment, monitoring & servicing**

Apps can be easily deployed to managed PCs for scheduled or immediate installs

Easy monitoring of installs through admin console

Updates to applications can be easily rolled out

Failure investigation, uninstall



# UPDATE MANAGEMENT

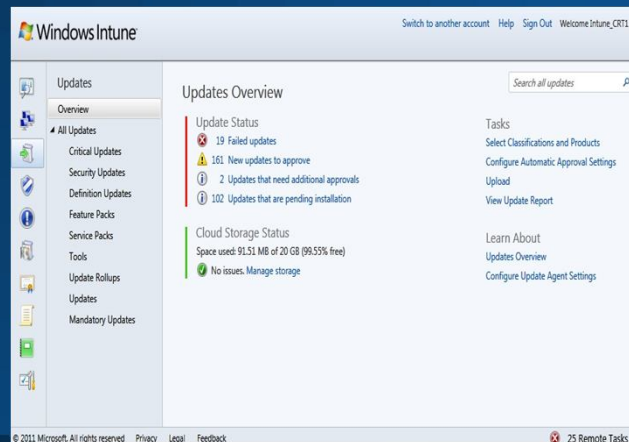
3<sup>rd</sup> party update support

Builds on WSUS and Microsoft Update framework

Design your update management workflows

Easy ongoing management  
(Patch Tuesdays are easy)

Configuration options to choose updates to manage and customize the updates agent



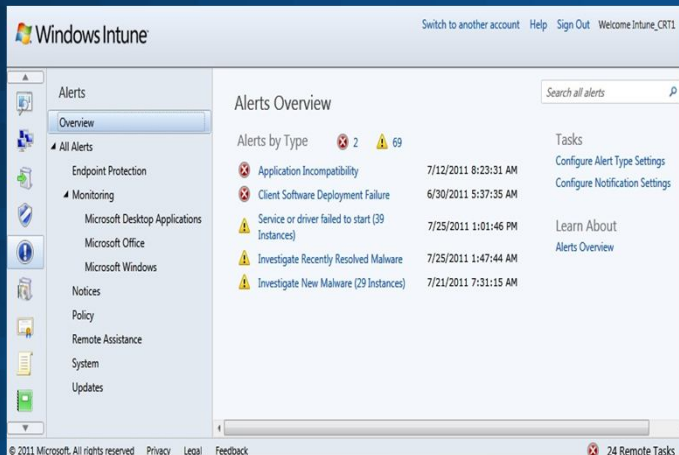
# DESKTOP MONITORING AND ALERTS

System Center Operations Manager 2007 R2  
Agent for desktop monitoring

Windows, Office and desktop application  
monitoring provided in-box.

Configurable alert categories and alert  
thresholds to reduce noise

Configurable email notifications







## MANAGING & SECURING YOUR PCS WITH WINDOWS INTUNE

Oct 2011 release

## WHAT'S NEW IN WINDOWS INTUNE SPRING PRE-RELEASE?

## EMERGING IT TRENDS

- Consumerization of IT is reaching a tipping point
  - Trend reversal in consumer and business technology evolution
  - 31% of employees access corporate data using personal devices (primarily smartphones)
- End user persona is changing (Rapidly)
  - End user's FAR more tech savvy
  - "Digital Natives" coming into workforce have never known life without ubiquitous technology
  - Higher end user expectations for IT services
- Shifting focus of IT
  - How can I manage this proliferation of heterogeneous devices?
  - How can I reduce security risks while enhancing user productivity?
  - New tools, strategies and processes needed to address these trends

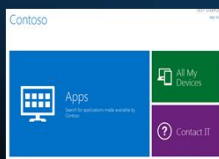
## WHAT'S NEW IN THE PRE-RELEASE?

### User Centric IT Pro experience



- Enable IT pros to think users first
- 

### Self Service Portal



Empower end users to self service their management needs

### Modern Device Management



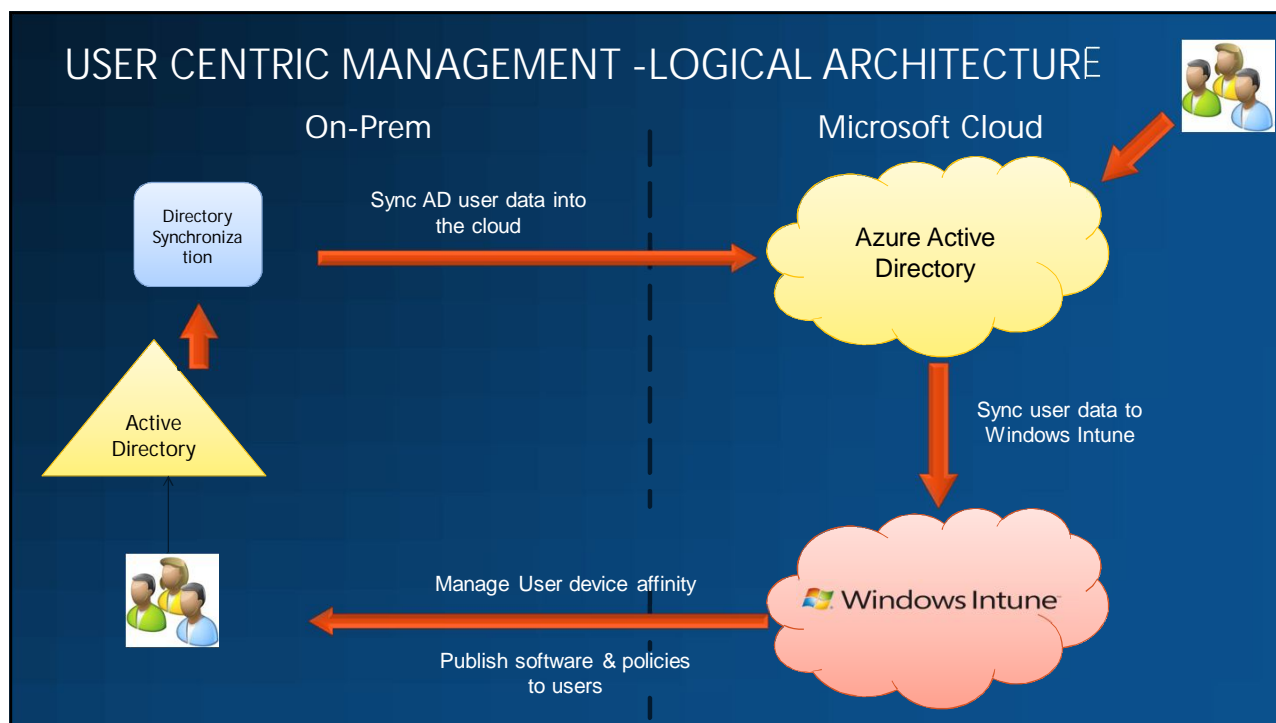
Manage Corporate and Personally owned mobile (phone & tablets) devices

User Centric Management

# USER CENTRICITY FOR IT PROS

## Allow the administrator to think users first

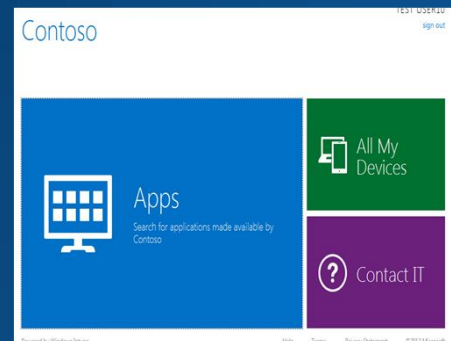
- **User identity**
  - Leverage existing investments in Active Directory/Office 365
  - Enterprise class identity and authentication services
- **User Device Affinity**
  - Establish and maintain user/device relationship
  - Identify users with non compliant devices
- **Dynamic Grouping**
  - Dynamic updates to user group membership based on Security groups/managers
  - Define exception rules
  - Deploy Software and Policies to user groups



# USER CENTRICITY FOR END USERS

Enable IT self service for end users with Company Portal

- Self Enroll Devices
  - View all my devices
  - Manage device affinity
- Web based software catalog
  - Easily search and install software
  - Users decide what software/apps to install from catalog made available to them
  - Install software locally/remotely
  - Do not need administrator privileges
- Contact IT for support



USER CENTRICITY FOR IT  
PROS AND END USERS

Apr 2012 beta

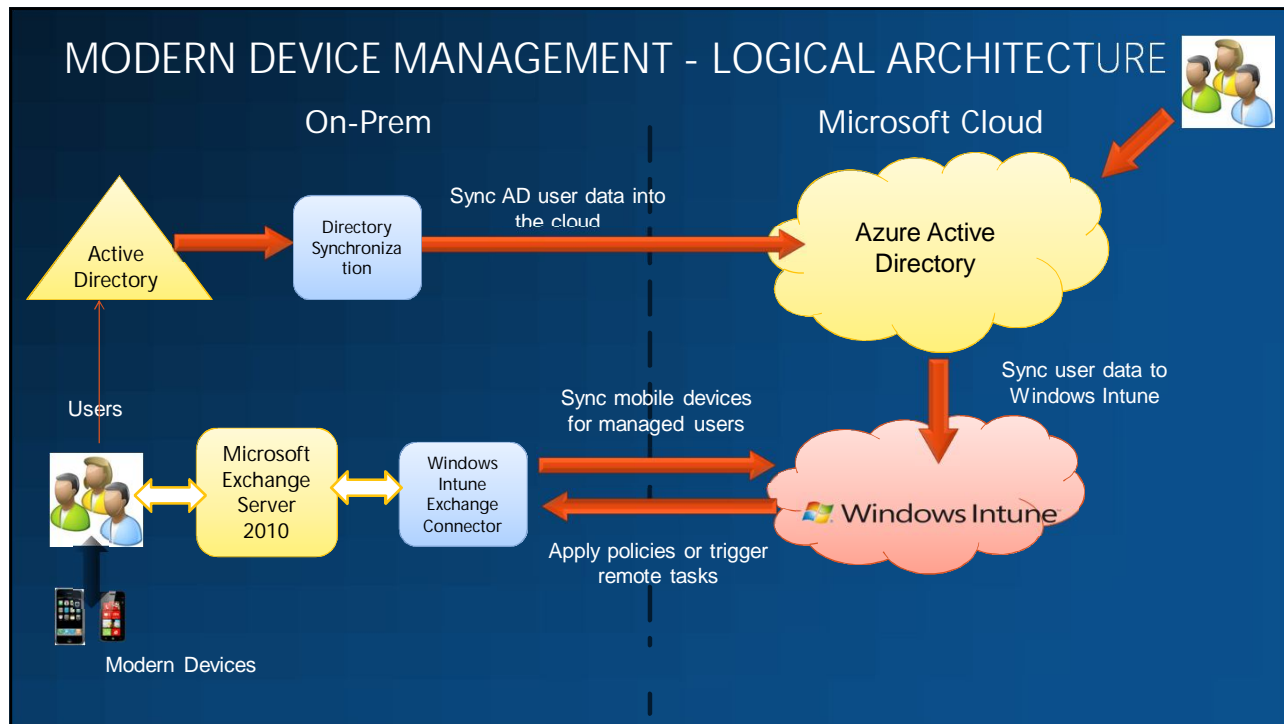
# MODERN DEVICE MANAGEMENT

## USER CENTRIC MODERN DEVICE MANAGEMENT

Enable users to connect to corporate resources on any device

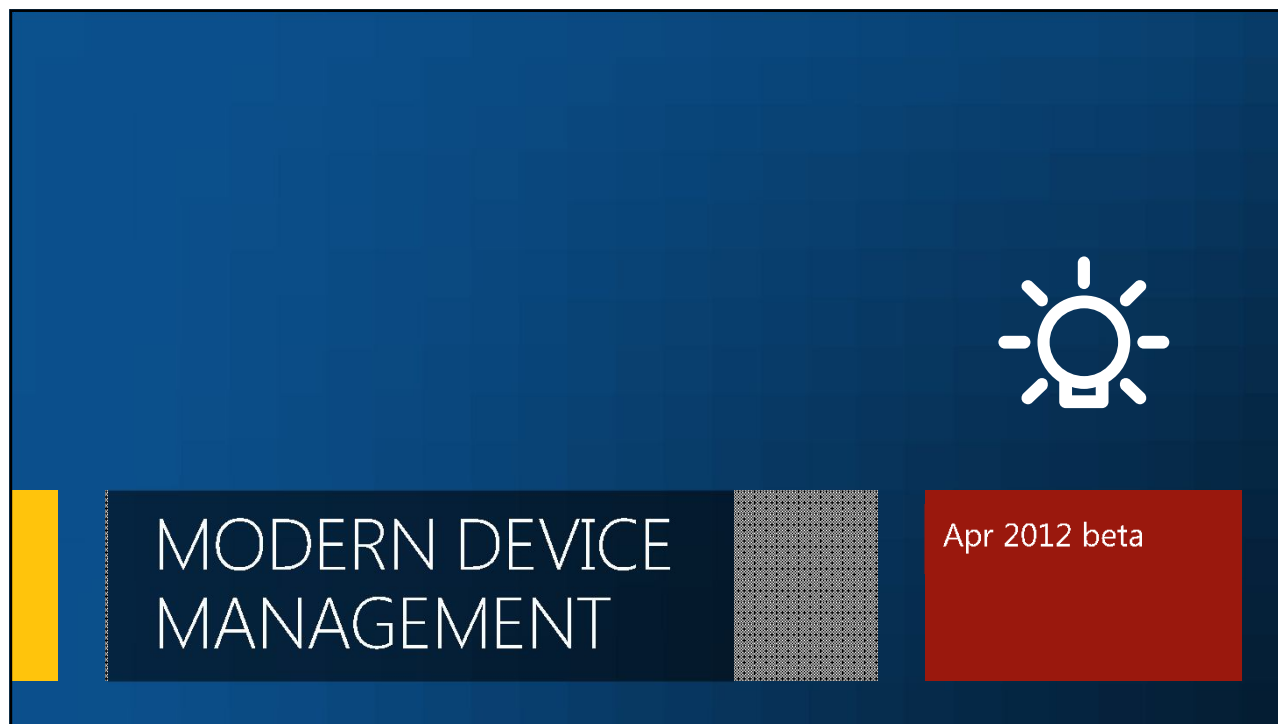
- Mobile portal
  - Search and install apps from Enterprise mobile app catalog
  - Contact IT for support
- Protect corporate data
  - Set security policies for mobile devices
  - Restrict device types that can access corporate email
  - Retire and optionally wipe inactive/ lost/stolen devices
- Single pane of glass for all devices
  - Unified console and user experience for managing PCs and Mobile devices





## MODERN DEVICE MANAGEMENT

- On premise Exchange 2010 and Connector required for
  - Device inventory
  - User device association
  - Mobile security policies
  - Remote Wipes
- Not required for
  - Mobile portal features



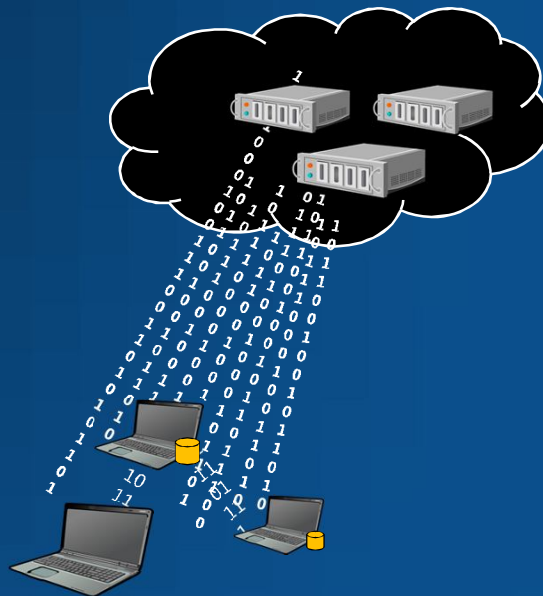
## BANDWIDTH OPTIMIZATION

### Customer Feedback

- Help us minimize internet bandwidth usage for updates and software in remote branch offices

### Feature Enhancement

- ✓ Windows Intune clients now leverage Win7 Peer distribution platform – a technology that powers Branch Cache
- ✓ No additional infrastructure required



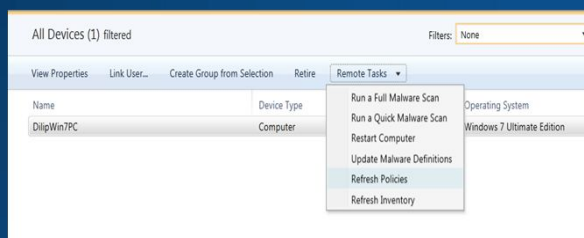
## POLICY MANAGEMENT

### Customer Feedback

How can I push out security policies immediately without waiting for the default client sync window

### Feature Enhancement

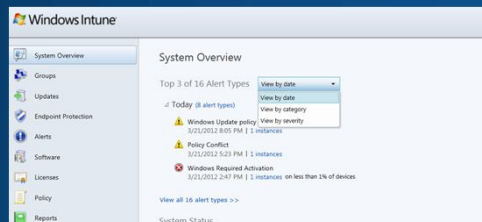
- ✓ New remote task to refresh policies on remote computers
- ✓ Compliance status updated on task completion
- ✓ Remote task for inventory update



# ALERTS

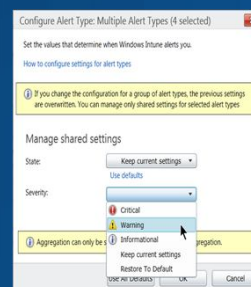
## Customer Feedback

How can Windows Intune help us improve Alert responses to critical issues?



## Feature Enhancement

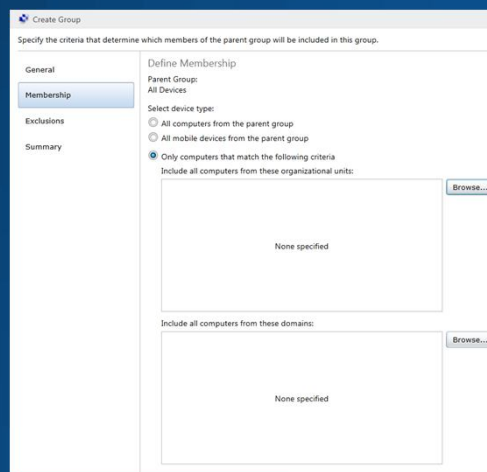
- ✓ New alert filters on System overview dashboard, helps IT focus on most pressing issues
- ✓ Alert severity can now be customized to meet your needs and reduce noise



# DYNAMIC DEVICE GROUP MEMBERSHIP

## Customer Feedback

I would like to assign devices to specific groups similar to my AD hierarchy



## Feature Enhancement

- ✓ New dynamic group membership for Computers that can be based on Domain or OU membership

# UPDATE MANAGEMENT

## Customer Feedback

I need to view compliance with my 'Patch Tuesday' KBs

## Feature Enhancement

- ✓ New view provides compliance rollup of updates belonging to each security bulletin

Security Updates By KB (1000+) filter: Security Updates By KB

View Properties Edit Approve Decline Delete Upload			
Bulletin ID	KB Article	Available Since	Approval
▷ MS12-016	2668562	2/14/2012 6:00:09 PM	Approved
▲ MS12-016	2633880	2/14/2012 10:01:31 AM	Approved
Update Name		Approval	Needed
Security Update for Microsoft .NET Framework 2.0 SP2 on		Yes	
Security Update for Microsoft .NET Framework 2.0 SP2 on		Yes	
Security Update for Microsoft .NET Framework 2.0 SP2 on		Yes	
▷ MS12-016	2633879	2/14/2012 10:01:31 AM	Approved
▷ MS12-016	2633874	2/14/2012 10:01:31 AM	Approved
▷ MS12-016	2633873	2/14/2012 10:01:31 AM	Approved

# SUMMARY/RECAP SLIDE

- Enhance your management solution with the cloud
- Rapid releases to add innovative features
- Next Wave to offer
  - Cross platform modern device management
  - User centric management with AD integration
- Call to action
  - Attend 2 other Intune deep dive sessions this afternoon – Modern device management, Deep dive on User centric management
  - Sign up for trial account or to test the Pre-Release version






## CHARLIE RUSSEL

Microsoft PowerShell MVP



✉ [Charlie@Scribes.com](mailto:Charlie@Scribes.com)  
 📄 [Blogs.msmvps.com/russel](http://Blogs.msmvps.com/russel)



## CUSTOMER RECEPTION



**NOW@MMS2012**  
Microsoft Management Summit

The Windows Intune team invites you to an exclusive reception at the chic Postrio Bar and Grill by Wolfgang Puck.

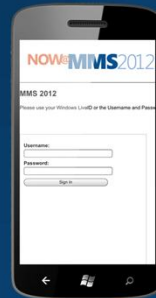
**WEDNESDAY, APRIL 18, 5:30 - 7:30 pm**

You are cordially invited to the Windows Intune Meet and Greet reception on Wednesday, April 18th from 5:30-7:30pm during the Microsoft Management Summit. The Windows Intune product team will be sharing what's new with Windows Intune while celebrating our first year in market.

Please [RSVP prior to Wednesday, April 11th](#) in order to secure your spot at this exclusive event. Space is limited. We look forward to seeing you there.

[POSTRIO The Venetian Resort Hotel Casino](#) | 3377 Las Vegas Blvd. S. | Las Vegas | [MAP](#)

Complete your  
session evaluation  
today and enter  
to win prizes



<http://www.mms-2012.com/signin>

Further instructions found in the conference guide

## RESOURCES

Access **Digital MMS**  
to view session  
recordings after  
the event.



<http://www.mms-2012.com/>

